

Multi-Quick
MO 100 (complete)

Application Examples:

Injection moulding, metal cuttings and metal forming

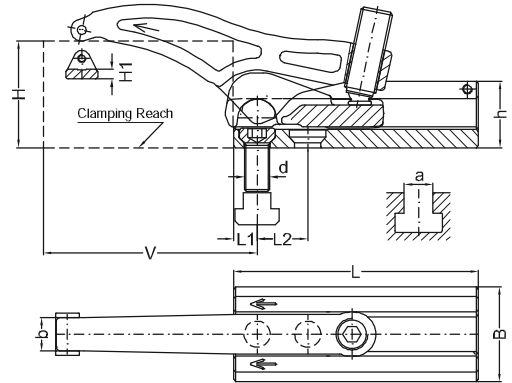
- protected Trademark Multi Quick
- stepless vertically and horizontally adjustable
- strong clamping pressure for small clamping torque
- greater horizontal adjustment due to the integrated sliding plate

Clamping Force: **Up to 60kN**

- **Material: Hardened alloy steel**
- **Clamping Arm: Drop forged**

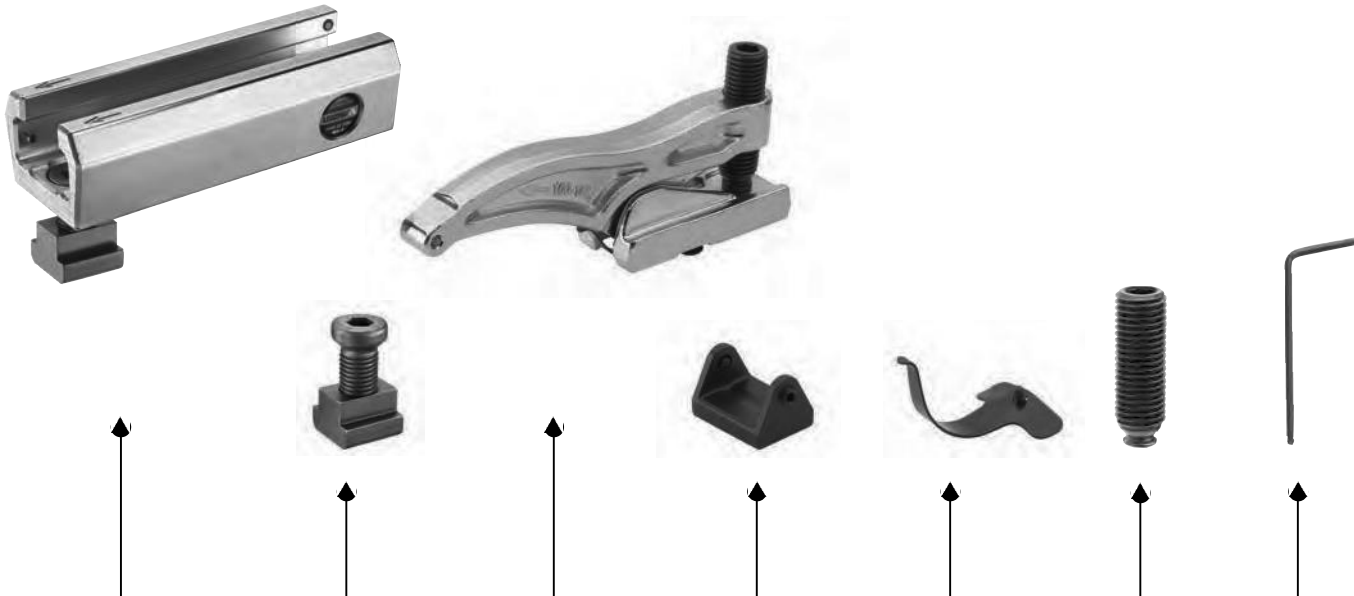


[optional]



			for T-Slots	for Tapped Holes									
H	d	a	Part No.	Part No.	V	L	L1	L2	B	b	h	H1	kN
0-48 K	-	-	100-048-13	-	12-82	95	12	20	52	18	37	5	32
	M08	10	100-048-0810	100-048-08									
	M10	12	100-048-1012	100-048-10									
	M12	14	100-048-1214	100-048-12									
5-67 L	-	-	100-067-13	-	12-112	135	12	28	52	18	37	5	30
	M08	10	100-067-0810	100-067-08									
	M10	12	100-067-1012	100-067-10									
	M12	14	100-067-1214	100-067-12									
0-55 K	-	-	100-055-17	-	15-95	110	15	25	60	21	42	6	40
	M14	16	100-055-1416	100-055-14									
	M16	18	100-055-1618	100-055-16									
6-78 L	-	-	100-078-17	-	15-135	155	15	32	60	21	42	6	43
	M14	16	100-078-1416	100-078-14									
	M16	18	100-078-1618	100-078-16									
0-62 K	-	-	100-062-21	-	19-110	125	19	32	75	25	48	7	45
	M18	20	100-062-1820	100-062-18									
	M20	22	100-062-2022	100-062-20									
7-88 L	-	-	100-088-21	-	19-159	175	19	38	75	25	48	7	49
	M18	20	100-088-1820	100-088-18									
	M20	22	100-088-2022	100-088-20									
8-77 K	-	-	100-077-25	-	22-125	150	22	38	88	33	57	8	55
	M22	24	100-077-2224	100-077-22									
	M24	28	100-077-2428	100-077-24									
	M24	36	100-077-2436	-									
	-	-	100-077-31	-									
	M30	36	100-077-3036	100-077-30									
8-102 L	-	-	100-102-25	-	25-128	150	25	45	88	33	57	8	55
	M22	24	100-102-2224	100-102-22									
	M24	28	100-102-2428	100-102-24									
	M24	36	100-102-2436	-									
	-	-	100-102-31	-									
	M30	36	100-102-3036	100-102-30									
					25-185	205	25	45	88	33	57	8	60

Multi-Quick MO 100 (Spare Parts)



Clamping Shoe		Fixing Set		Clamping Arm with Sliding Plate		Protection Plate		Spring with Screw		Ball Pressure Screw		Allen Key		
Part No.		Part No.		Part No.		Part No.		Part No.		Part No.		Part No.		
100-2-095-13		-		220-5-038-13		991-150-12-1		360-100-113		310-16-055		610-08		
100-2-095-0810		960-0810-25		K										
100-2-095-1012		960-1012-29												
100-2-095-1214		960-1214-31												
100-2-135-13		-		220-5-057-13		991-150-12-1		360-100-113		310-16-060		610-08		
100-2-135-0810		960-0810-25		L										
100-2-135-1012		960-1012-29												
100-2-135-1214		960-1214-31												
100-2-110-17		-		220-5-043-17		991-150-16-1		360-100-117		310-20-060		610-10		
100-2-110-1416		960-1416-35		K										
100-2-110-1618		960-1618-40												
100-2-155-17		-		220-5-068-17		991-150-16-1		360-100-117		310-20-070		610-10		
100-2-155-1416		960-1416-35		L										
100-2-155-1618		960-1618-40												
100-2-125-21		-		220-5-062-21		991-150-20-1		360-100-121		310-24-070		610-12		
100-2-125-1820		960-1820-45		K										
100-2-125-2022		960-2022-51												
100-2-175-21		-		220-5-078-21		991-150-20-1		360-100-121		310-24-090		610-12		
100-2-175-1820		960-1820-45		L										
100-2-175-2022		960-2022-51												
100-2-150-25		-		200-5-070-25		991-7024-1		360-100-125		310-24-070		610-12		
100-2-150-2224		960-2224-55		K										
100-2-150-2428		960-2428-60												
100-2-150-2436		960-2436-74												
100-2-150-31		-												
100-2-150-3036		960-3036-75												
100-2-205-25		-		220-5-085-25		991-150-24-1		360-100-125		310-24-090		610-12		
100-2-205-2224		960-2224-55		L										
100-2-205-2428		960-2428-60												
100-2-205-2436		960-2436-74												
100-2-205-31		-												
100-2-205-3036		960-3036-75												

Multi-Quick
MO 100S (complete)

Clamping Force: **Up to 90kN**

Application Examples:

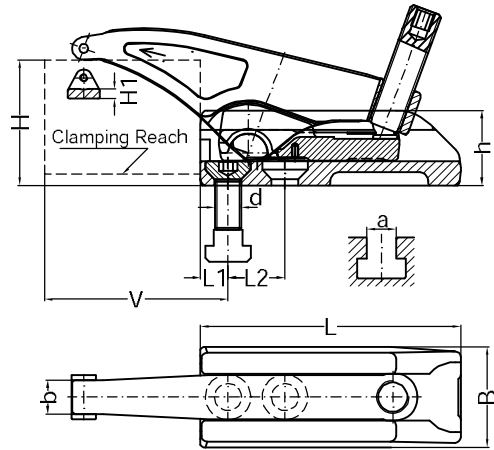
Injection moulding, heavy duty metal cutting and metal forming

- protected Trademark Multi Quick
- stepless vertically and horizontally adjustable
- strong clamping pressure for small clamping torque
- greater horizontal adjustment due to the integrated sliding plate
- stronger design forged Clamping Shoe and Clamping Arm
- up to 50% higher clamping force than our MO 100 and MO 106 is achieved, by redesign and reposition of the pivot on the sliding plate
- Fixing bolts now come with a larger head
- flatter designed forged clamping shoe

- **Material: Hardened alloy steel**
- **Clamping arm/Clamping shoe: Drop forged**



[optional]



		for T-Slots		for Tapped Holes										
H	d	a	Part No.		Part No.	V	L	L1	L2	B	b	h	H1	kN
5-46 K	-	-	100S-046-13		-	14-85	98	14	23	52	18	37	5	40
	M12	14	100S-046-1214		100S-046-12									
	M12	16	100S-046-1216											
5-64 L	-	-	100S-064-13		-	14-112	140	14	30	52	18	37	5	40
	M12	14	100S-064-1214		100S-064-12									
	M12	16	100S-064-1216											
6-54 K	-	-	100S-054-17		-	17-98	112	17	28	62	21	46	6	50
	M14	16	100S-054-1416		100S-054-14									
	M16	18	100S-054-1618		100S-054-16									
	M16	20	100S-054-1620											
6-77 L	-	-	100S-077-17		-	17-134	160	17	35	62	21	46	6	50
	M14	16	100S-077-1416		100S-077-14									
	M16	18	100S-077-1618		100S-077-16									
	M16	20	100S-077-1620											
7-61 K	-	-	100S-061-21		-	21-114	128	21	34	76	25	56	7	60
	M20	22	100S-061-2022		100S-061-20									
	M20	24	100S-061-2024											
7-87 L	-	-	100S-087-21		-	21-157	190	21	40	76	25	56	7	60
	M20	22	100S-087-2022		100S-087-20									
	M20	24	100S-087-2024											
8-101 L	-	-	100S-101-25		-	25-181	220	25	50	90	33	65	8	70
	M24	28	100S-101-2428		100S-101-24									
	M24	36	100S-101-2436											
10-111 L	-	-	100S-111-31		-	30-200	232	30	55	104	33	75	10	90
	M30	36	100S-111-3036		100S-111-30									
	M30	42	100S-111-3042											
	M36	-	-		100S-111-36									

Multi-Quick MO 100S (Spare Parts)



Clamping Shoe		Fixing Set		Clamping Arm <i>with Sliding Plate</i>		Protection Plate		Spring <i>with Screw</i>		Ball Pressure Screw		Allen Key	
Part No.		Part No.		Part No.		Part No.		Part No.		Part No.		Part No.	
100S-2-098-13		–		100S-5-046-13		991-150-12-1		360-100-113		310-16-055		610-08	
100S-2-098-1214		961-1214-033		K									
100S-2-098-1216		961-1216-033											
100S-2-140-13		–			100S-5-064-13		991-150-12-1		360-100-113		310-16-070		610-08
100S-2-140-1214		961-1214-033		L									
100S-2-140-1216		961-1216-033											
100S-2-112-17		–			100S-5-054-17		991-150-16-1		360-100-117		310-20-066		610-10
100S-2-112-1416		961-1416-038		K									
100S-2-112-1618		961-1618-043											
100S-2-112-1620		961-1620-043											
100S-2-160-17		–		100S-5-077-17		991-150-16-1		360-100-117		310-20-083		610-10	
100S-2-160-1416		961-1416-038		L									
100S-2-160-1618		961-1618-043											
100S-2-160-1620		961-1620-043											
100S-2-128-21		–		100S-5-061-21		991-150-20-1		360-100-121		310-24-080		610-12	
100S-2-128-2022		961-2022-054		K									
100S-2-128-2024		961-2024-054											
100S-2-190-21		–			100S-5-087-21		991-150-20-1		360-100-121		310-24-098		610-12
100S-2-190-2022		961-2022-054		L									
100S-2-190-2024		961-2024-054											
100S-2-220-25		–			100S-5-101-25		991-150-24-1		360-100-125		310-27-110		610-14
100S-2-220-2428		961-2428-067		L									
100S-2-220-2436		961-2436-080											
100S-2-232-31		–			100S-5-111-31		–		360-100-131		310-30-122		610-14
100S-2-232-3036		961-3036-082		L									
100S-2-232-3042		961-3042-095											
100S-2-232-37		–											
100S-2-232-36		391-36-080											